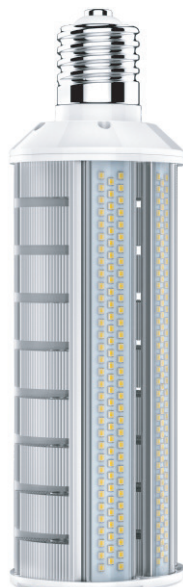
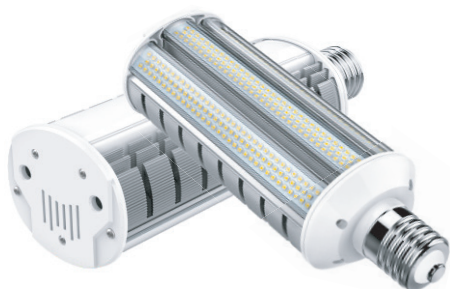


**20W
40W
60W**



REPLACE



| | | | | | | | | | | | | |
|---|---|---|--------------------|--------------------|---|---|---|--------------------|------------|---|-------------|-------------|
|  |  |  | PF ≥ 0.9 | CRI ≥ 80 |  |  |  | LED 2835 | IES |  | LM80 | LM79 |
|---|---|---|--------------------|--------------------|---|---|---|--------------------|------------|---|-------------|-------------|

Specifications

| Model No. | Power | led Qty | PF | CRI | Voltage | CCT | Lumen | Size mm (x 0.0393=inch) | Operation temp (°C/°F) | Weight (lbs=kg*2.2) | Certificate | Equal to |
|-----------|-------|-----------------|------|-----|-----------------------|------------|------------|---------------------------------|------------------------|---------------------|---------------------------------------|-----------------|
| WSH38 | 20W | 96leds 2835 | ≥0.9 | ≥80 | 100~277VAC 50~60Hz | 2700~6500K | 3000±200lm | E26 Φ 92*131 | minus 40~60°C | NW 0.46kg | CE ROHS LM80 DCL cUL/UL LM79 | 100W HPS MHL |
| | | | | | | | | E39 Φ 92*148 EX39 Φ 92*148.1 | minus 40~140°F | GW 0.58kg | | |
| WSH38 | 40W | 192leds 2835 | ≥0.9 | ≥80 | 100~277VAC 50~60Hz | 2700~6500K | 6000±200lm | E26 Φ 92*198 | minus 40~60°C | NW 0.76kg | CE ROHS LM80 DCL cUL/UL LM79 | 200W HPS MHL |
| | | | | | | | | E39 Φ 92*215 EX39 Φ 92*215.1 | minus 40~140°F | GW 0.90kg | | |
| WSH38 | 60W | 294leds 2835 | ≥0.9 | ≥80 | 100~277VAC 50~60Hz | 2700~6500K | 9000±200lm | E26 Φ 92*253 | minus 40~60°C | NW 1.02kg | CE ROHS LM80 DCL cUL/UL LM79 | 250W HPS MHL |
| | | | | | | | | E39 Φ 92*272 EX39 Φ 92*272.1 | minus 40~140°F | GW 1.18kg | | |

Features

2835 150lm/W



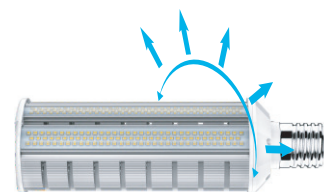
350 degree twistable



Flame retardant material



180 degree beam angle



Application



Wall pack



Shoe box



Canopy



Low bay



Area light



Cobra Head



Before

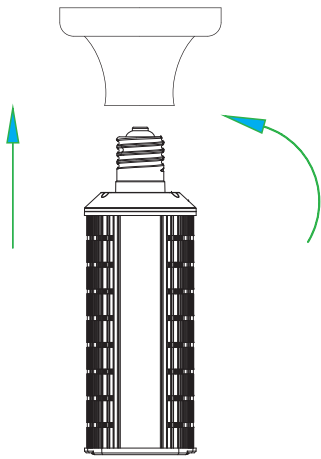


After



Installation

Lamp Installation



Step:1

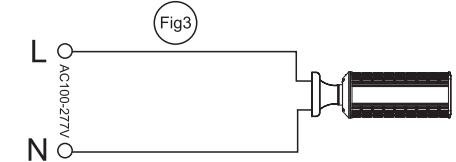
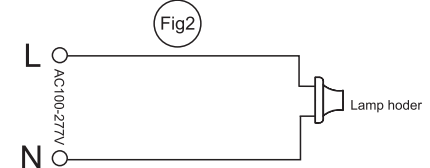
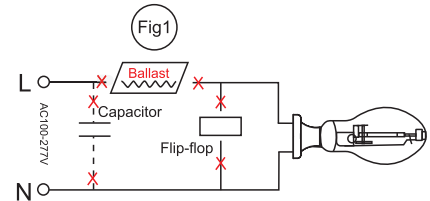
Shown as Figure 1
Remove old ballast or disconnect from existing lamp holder. Remove and dispose of ballast in correct manner.
(North America 100-277VAC)

Step:2

Shown as Figure 2
Reconnect directly to the existing lamp holder.
(North America 100-277VAC)

Step:3

Shown as Figure 3
Install new LED replacement lamp. Please make sure the old fitting is correctly earth.
(North America 100-277VAC)



Support Stand Installation

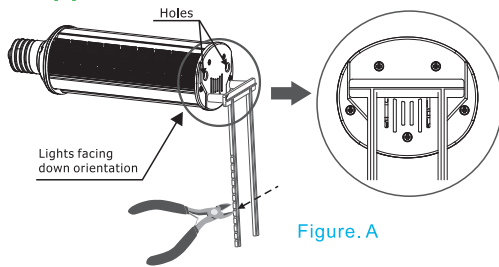


Figure. A

Instructions for two legs stand (shown as figure A):

- Step 1: Screw the lamp onto the socket tightly, then adjust the lamp slightly, make the LEDs side of lamp facing down orientation.
- Step 2: Fix the two legs acrylic stand onto the bottom of the lamp.
- Step 3: Cut off the excess part of the stand.

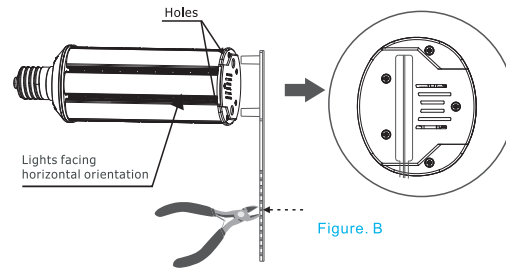


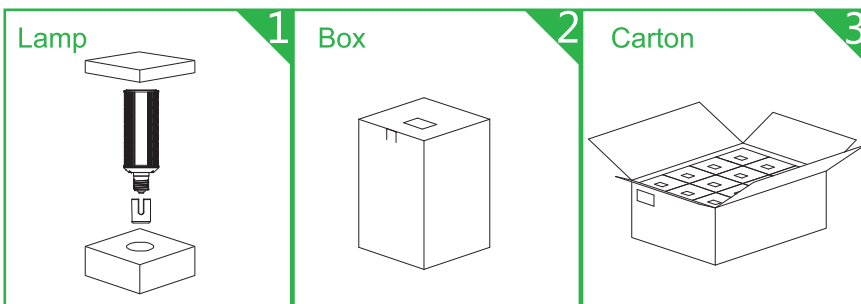
Figure. B

Instructions for one leg stand (shown as figure B):

- Step 1: Screw the lamp onto the socket tightly, then adjust the lamp slightly, make the LEDs side of lamp facing horizontal orientation.
- Step 2: Fix the one leg acrylic stand onto the bottom of the lamp.
- Step 3: Cut off the excess part of the stand.

Packing

| Wattage | Inner box size | N.W per lamp (lbs=kg*2.2) | G.W per box (lbs=kg*2.2) | G.W per Carton (lbs=kg*2.2) | Carton Size | Quantity Per Carton |
|---------|----------------|---------------------------|--------------------------|-----------------------------|---------------|---------------------|
| 20W | 93*93*190mm | 0.46kg | 0.58kg | 13.97kg | 390*296*396mm | 24 |
| 40W | 102*102*258mm | 0.76kg | 0.90kg | 11.0kg | 425*322*273mm | 12 |
| 60W | 102*102*305mm | 1.02kg | 1.18kg | 14.21kg | 425*322*320mm | |



Pack Quantity:

20W:24pcs
40W 60W:12pcs

CAUTIONS

- Risk of electric shock. Do not use where directly exposed to water.
- Do not use with dimmers, timers, or other control devices.
- 20W 40W 60W are suitable for using in totally enclosed fixtures.
- Don't take apart the lamps without our permit.
- Please read carefully manual before installation.

