

Project:	
Type:	
Catalog #:	

### Product Description

FME Economic Canopy LED luminaire has a beautiful low profile design intended for indoor industrial/warehouse/commercial lighting applications. LED driver and thermal management. High-performance illumination that lasts 50,000hrs. It's ideal for replacing 250-300W Metal Halide, with typical energy savings of 80%.

### Application

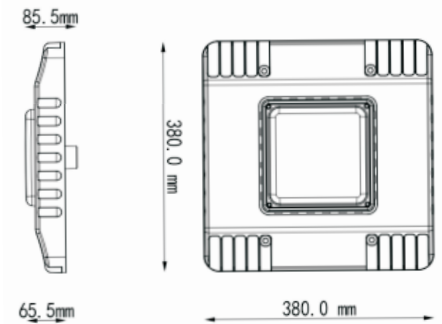
- Gas station
- Service Station
- Parking Garage

### Projected LED Lumen Maintenance

Operating hours	0	25000	50000
Lumen maintenance factor	1	0.91	0.8



### Dimensions:

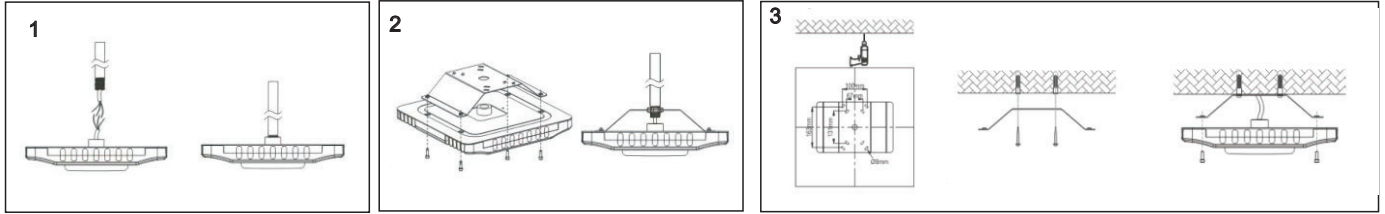


MODEL	CHIP	INPUT	OUTPUT	EFFICIENCY	CRI	COLOR TEMP	INPUT VOLT
EGC-150W	SMD 2835	130W	18750LM	125LM/W	>80EA	3000K / 4000K / 5000K	100-277V UL DRIVER

ANGLE	RATING	WORKING TEMP	JUNCTION TEMP	LAMP EFFICIENCY	CERTS.	EQUIVALENT
110D	IP 65	-40-+60°C	<75°C	>90%	UL, DLC	250-300W MH/HPS

Product	Power	Replacement	Color Temperature	Mounting	Finish
EGC-150W-40K-T EGC-150W-45K-T EGC-150W-50K-T EGC-150W-57K-T	150W	250-300W MH/HPS	40K 4000K 45K 4500K 50K 5000K 57K 5700K	PM - Pendant SM - Surface Mount CM - Ceiling Mount	T-White

### Installation Options



### Photometrics

