

Project:	
Type:	
Catalog # :	

FME Lighting | 877 - 234 - 8460 | info@fmelighting.com



### SPECIFICATIONS

Electric	
Rated Power	60W / 75W / 120W / 150W
Input Voltage	AC100-277V, 347-480V
Input Frequency	50/60Hz
Power Factor	> 0.9
Driver Efficiency	≥ 90%
DC output Ripple & Noise	< 200mVP-P
Optical	
Lumen Output	9,000lm ~ 22,500lm
Luminous Efficacy (Lumens per Watt)	150 Lm/W
Beam Angle	60° / 90° / 110°
CCT	2700K, 3000K, 4000K & 5000K
CRI	Ra>70
Environmental	
Operating Temperature	-40°C~+50°C
Ambient Operating Humidity	10%~90% RH
Technical	
Lens Material	Glass
Mounting Options	Pendant / Recessed / Hanging Ceiling / Surface
Net Weight	6kg / 8.5kg
Lumen Maintenance	L70 > 150,000hours @ 25°C
Warranty	5-year limited system warranty

### CERTIFICATIONS

- Class I, Division 2  
Groups A, B, C, D
- Class I, Zone 2  
Group IIC
- Simultaneous Presence
- UL844: Hazardous Locations
- UL 1598: Wet Locations
- UL 8750: LED Safety
- IP66/67
- IK08

### LUMEN CHART

Wattage Input Voltage	Lumens
60W AC100-277V	9000lm
75W AC100-277V	11250lm
120W AC100-277V	18000lm
150W AC100-277V	22500lm

### DIMENSIONS

\*See Page 2 for All Dimensions Diagrams.

### ACCESSORIES



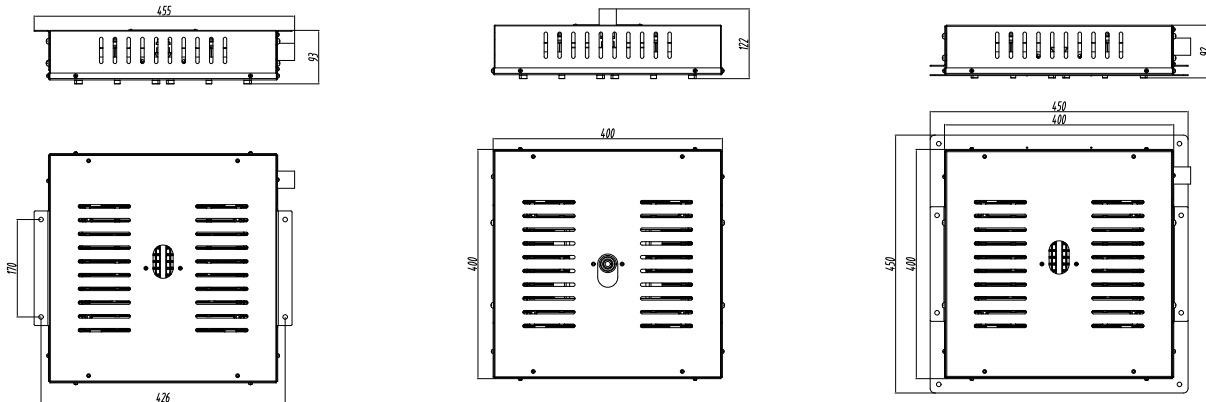
### ORDERING INFORMATION

#### ORDERING GUIDE

Series	Wattage	Voltage	CCT	Optic	Lens	Mounting	Thread	Surge Protection	Accessories
ICE	6 = 60W 7 = 75W 12 = 120W 15 = 150W	LV = 100-277 VAC HV = 347-480V VAC	S = 2700K I = 3000K C = 4000K K = 5000K	X = 60° Y = 90° Z = 110°	T = Transparent glass F = Frosted glass	P = Pendant mount (3/4" NPT) HM = Hanging mount RM = Recessed mount CM = Ceiling mount SM = Surface mount	THT = Threaded hole top THS = Threaded hole side CGLT = Cable gland top CGLS = Cable gland side BLANK = Pendant mount only	SP10U = 10KV surge protector (100-277V) *Standard SP10N = 10KV surge protector (347-480V)*Standard SP20U = 20KV surge protector (100-277V) SP20N = 20KV surge protector (347-480V)	SC2 = Safety cable Φ6 (3mm) CAB = 3' SE00W-18/3 Cord CGL = Cable Gland 3/4" NPT

### DIMENSIONS

Unit: mm (inch)



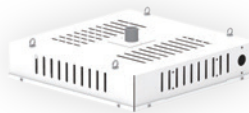
### MOUNTING OPTIONS



**P**  
Pendant mount  
(3/4" NPT)



**RM**  
Recessed mount



**HM**  
Hanging mount



**CM**  
Ceiling mount



**SM**  
Surface mount



### THREAD OPTIONS



**THT**  
Threaded hole top



**THS**  
Threaded hole side



**CGLT**  
Cable gland top



**CGLS**  
Cable gland side