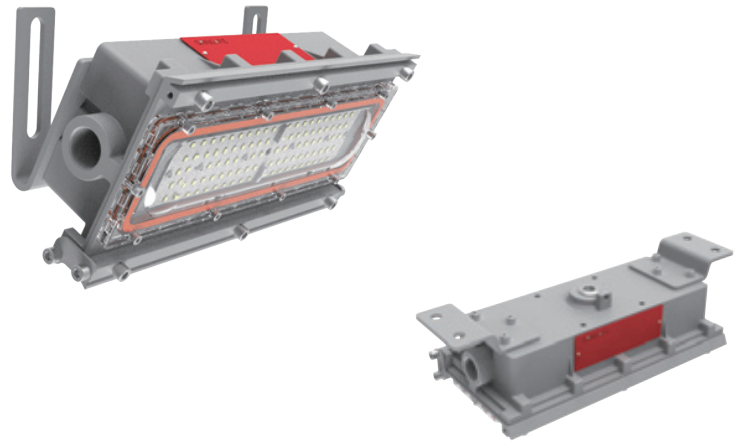


<b>Project:</b>	
<b>Type:</b>	
<b>Catalog #:</b>	



### Compliance

#### NEC/CEC Standard

UL 844 Hazardous Locations  
 Class I Division 2, Group A, B, C, D  
 Class II Division 1, Group E, F, G  
 Class II Division 2, Group F, G  
 Class III  
 Class I, Zone 2, Group IIC  
 Zone 21  
 Zone 22  
 Simultaneous Presence

#### UL 1598 Wet Locations

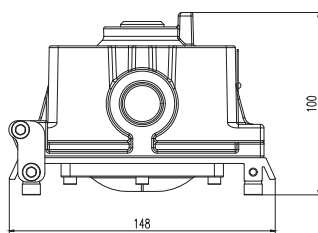
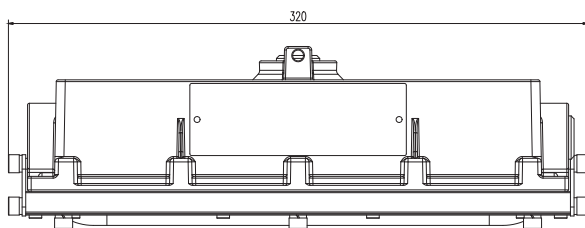
UL 1598A Marine Outside Type (Salt Water)  
 UL 8750 LED Safety  
 CSA C22.2 No.137-M1981  
 CSA C22.2 NO. 250.0

### Warranty

5-year limited system warranty  
 Lumen Maintenance:150,000hours@L70

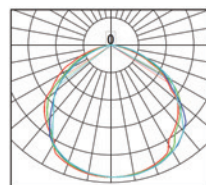
### Dimensions

Dimensions in millimeters (mm)



### Beam Distribution

110°



### Features:

- Exceptional optical design
- High efficiency LED Driver, voltage AC120-277V
- Cast Aluminum epoxy coating
- PC lens or Diffuse PC lens
- CCT: selectable 2700-5000K or Amber
- 5 years manufacturer warranty
- 10 or 20KV Surge Supression
- Ambient: -40-65C

### Technical Data

#### Electric

Rated Power	20W / 30W
Input Voltage	AC100-277V
Input Frequency	50/60Hz
Power Factor	> 0.95
Driver Efficiency	≥ 90%
DC output Ripple & Noise	< 200mVP-P

#### Optical

Lumen Output	3,400lm / 5,100lm
Luminous Efficacy (Lumens per Watt)	170Lm/W
Beam Angle	115°
Correlated Color Temperature (CCT)	Amber 2700K 3000K 4000K 5000K
CRI	Ra>70

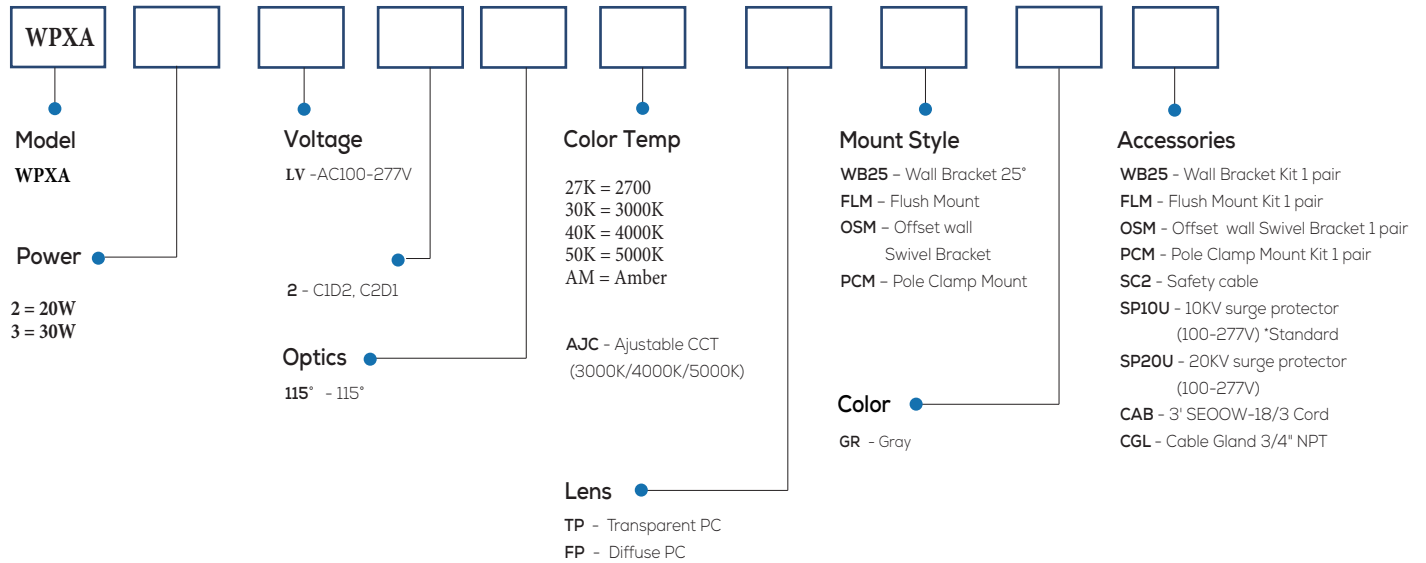
#### Environmental

Ambient Operating Temperature	-40°C~+65°C
Ambient Operating Humidity	10%~90% RH
Atmospheric pressure	86~106KPa

#### Technical

Lens Material	Transparent PC / Diffuse PC
Mounting Options	Wall mount
Cable Entry	3/4" NPT
Net Weight	2.3kg

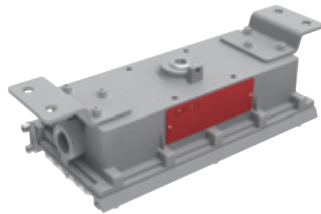
## Ordering Information and Mounting Accessories



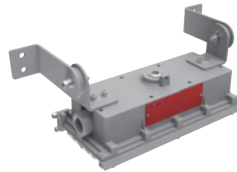
## Mounting Options



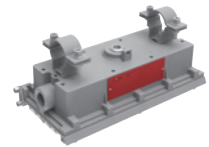
**WB25**  
Wall Swivel Bracket 25°



**FLM**  
Flush mount



**OSM**  
Offset ceiling / wall Swivel Bracket



**PCM**  
Pole Clamp Mount

## Accessories



**WB25**  
Wall Bracket Mount Kit 1 pair



**FLM**  
Flush Mount Kit 1 pair



**OSM**  
Offset ceiling / wall Swivel Bracket 1



**PCM**  
Pole Clamp Mount Kits 1 pair



**SC2**  
Stainless steel safety cable



**CAB**  
3' SE00W-18/3 Cord (Factory installed)



10KV Surge Protector \*Standard  
**SP10U**  
10KV (100-277V)



20KV Surge Protector  
**SP20U**  
20KV (100-277V)