

Project:	
Type:	
Catalog #:	

FME Lighting | 877 - 234 - 8460 | info@fmelighting.com



SPECIFICATIONS

Mounting

Suitable for installation in recessed 15/16"–1.5" T-Grid or hard ceiling applications. Hard ceiling (flange) type mounts via swing arm brackets that extend and clamp with a single screw action. Swing arm bracket also serves as connection for earthquake cables.

Housing

18 gauge cold rolled steel die-formed to shape with seams welded, ground smooth, and caulked airtight. Aluminum and 304 stainless steel available.

Door

One-piece 18 gauge cold rolled steel, gasketed and sealed overlapping door. Freedom Hinge™ design permits removal and hinging from either side. Aluminum and 304 stainless steel available.

Lens

Optic Plus lens (standard) completely hides diode image while providing greater than 90% light transmission.

Finish

Antimicrobial white powder-coat applied after phosphate pretreatment for superior adhesion and corrosion resistance. Brushed stainless steel door available.



Hardware

Stainless steel fasteners.

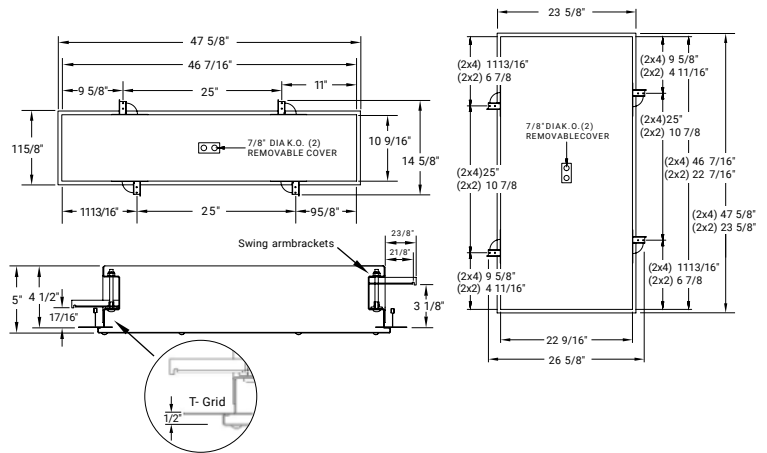
Driver

0-10Vdc 1% dimming, >0.9 PF, <20% THD
Factory programmable, Operating temp -40°C Min. to 50°C Max

CERTIFICATIONS

UL Listed wet location and IP65 rated.
Suitable for use in ISO-3 cleanrooms (209E Class 1).

DIMENSIONS



ORDERING INFORMATION

ORDERING GUIDE

SYM							V	D				
-----	--	--	--	--	--	--	---	---	--	--	--	--

Series	Luminaire Size	LED Source	Color Temperature	CRI	Door Material	Door Finish	Voltage	Driver	Internal Lens	External Lens	Options	Housing Material
Luminaire Size			Door Finish			External Lens						
A	1 x 4, <u>three rows max</u>		BS	Brushed (Stainless steel only)	00	No external						
B	2 x 2		W	White	33	.125 in. clear polycarbonate						
C	2 x 4		Voltage			Options						
LED Source			V	Variable, 120-277 V, 50/60Hz	2C	Two circuit wired						
Refer to the LED Source Table on Page 2 for available options.			Driver			CU	Canadian UL Listing					
Color Temperature			D	0-10VDC 1% Dimming, <u>standard</u>	CP	CCEA Chicago						
S	3500K		Internal Lens			EM	Emergency battery backup					
I	4000K		122	Optic Plus diffusing acrylic, <u>standard</u>	FH	Fuse and holder						
C	5000K		122R	Optic Plus with RF grid* <u>Must be used with RF filter</u>	IMS	Integral Occ Sensor						
CRI			130	.125 in. LED diffusing Lexan	NL-LED	Night light, LED						
80	Min 80 CRI		* Conducted and radiated emissions controlled as per MIL461 with the use of 122R lens and RF Filter.			PF	Plaster frame					
90	Min 90 CRI		For <u>Tested and Certified</u> MIL461 performance, Contact Factory			RF	Radio interference filter, one per circuit*					
Door Material			Housing Material			TP	Stainless steel torx head fasteners w/ pin					
A	Aluminum		A	Aluminum								
C	Cold rolled steel, <u>standard</u>		S	Stainless steel								
S	304 Stainless steel											

CRI	LED Life
>80	>100,000

LED Source	4000K 80 CRI		4000K 90 CRI		5000K 80 CRI		5000K 90 CRI		Input Watts
	Delivered Lumens	L/W	Delivered Lumens	L/W	Delivered Lumens	L/W	Delivered Lumens	L/W	
1' x 4' Fixture									
1W55	5391	131	4466	109	5545	135	4602	112	41.0
2W75	7881	132	6530	109	8106	136	6728	113	59.8
2W100	10325	130	8555	108	10620	134	8815	111	79.3
2W130	13820	126	11451	104	14215	130	11798	108	109.6
2' x 2' Fixture									
2W55	5445	133	4512	110	5601	137	4649	113	41.0
2W70	6980	127	5783	106	7179	131	5959	109	54.8
4W80	8473	133	7020	110	8715	137	7233	114	63.7
4W100	10890	133	9023	110	11202	136	9298	113	82.1
4W140	13960	127	11567	106	14359	131	11918	109	109.6
6W180	18358	131	15211	108	18883	134	15673	112	140.5
6W200	20940	127	17350	106	21538	131	17877	109	164.4
2' x 4' Fixture									
2W55	5869	147	4863	122	6037	152	5011	126	39.8
2W90	9354	138	7750	115	9621	142	7985	118	67.6
2W120	12281	137	10175	113	12631	141	10484	117	89.8
3W160	17008	138	14093	114	17494	142	14520	118	123.1
3W200	21802	133	18065	110	22425	136	18613	113	164.4
4W230	24561	137	20351	113	25263	141	20968	117	179.6
4W270	27301	134	22621	111	28081	138	23307	115	203.2
6W300	30635	142	25383	117	31510	146	26153	121	216.3
6W350	36842	137	30526	113	37894	141	31452	117	269.4
6W400	43605	133	36130	110	44851	136	37226	113	328.7

Specified Output Option

FME Lighting programmable drivers allows us to deliver a specific lumen output. If none of the options in the chart above fit your application, let us know the desired lumen output and we will do the rest. See the example for a 2x4 on how this will be specified:

Example Model:

SYM-C-XX¹SO-40/80-C-W-V-D-122/00-(XX²/LUMENS)

LUMENS = You provide the lumens.

XX¹ = We will determine the number of rows.

XX² = We will provide the wattage information.

Photometric Data @ 80 CRI with 122 lens

Use the multipliers below to adjust the delivered lumens

33 lens multiplier

.86