

LLX (LIGHTLYNX) Series

High Abuse Surface Mount LED Linear Light



Project:	
Type:	
Catalog # :	

FME Lighting | 877 - 234 - 8460 | info@fmelighting.com



SPECIFICATIONS

Mounting

Surface mounts to ceilings or walls. Able to be pendant mounted. Please contact factory.

Housing

Marine grade aluminum extruded housing and die-cast end caps.

Lens Frame

Marine grade aluminum extruded side rails and die-cast ends captivates lens.

Finish

Polyester powder-coated after phosphate pre-treatment for superior adhesion and corrosion resistance.

Lens

.125 in. thick extruded polycarbonate snap-fits into lens frame. Fully illuminated opal lens completely hides diode image while maintaining excellent transmission.

Gasket

Closed cell foam gasket continuously seals lens frame to housing for up to IP67 rating.

Hardware

Stainless steel, tamper-proof fasteners finished to match housing.

Driver

0-10Vdc 1% dimming, >0.9 PF, <20% THD
Factory programmable, Operating temp -40°C Min. to 50°C Max

Wiring

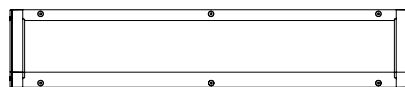
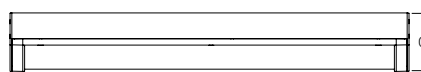
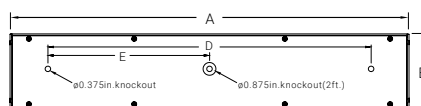
Driver provided with pre-wired 3-wire self-aligning input power quick disconnect and 2-wire quick disconnect to LED module.

Certifications

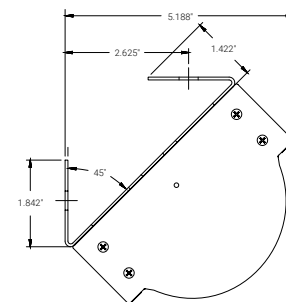
UL Listed wet location. IP65 rated.
Optional IP66 (NEMA4 / 4X rated) and IP67 ratings available. Constructed to pass MIL-S-901 Grade A, Type A, High Impact Shock Test and MIL-S-167 Type 1, Vibration Test.
Suitable for use in Natatorium Environments.

DIMENSIONS

2 ft., 3 ft., and 4 ft. Fixtures



Corner Mounting Option

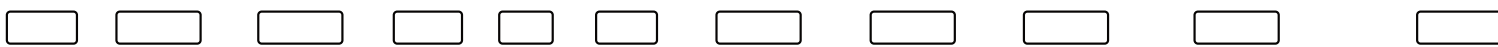


1 ft. Fixture

Size	A	B	C	D	E
1ft.	12.2"	5.0"	3.7"	7"	-
2 ft.	24.2"	5.0"	3.7"	18"	9"
3 ft.	36.2"	5.0"	3.7"	30"	-
4 ft.	48.2"	5.0"	3.7"	42"	21"

ORDERING INFORMATION

ORDERING GUIDE



Series	Luminary Size	LED Designation	Voltage	CCT	CRI	Finish	Hardware	IP Rating	Mounting	Accessory
LLX	1 = 1 ft. fixture 2 = 2 ft. fixture 3 = 3 ft. fixture 4 = 4 ft. fixture	Refer to the LED Source Table on Page 2 for available options.	V = Variable, 120-277 V, 50/60Hz	S = 3000K T = 3500K I = 4000K C = 5000K	8 = 80 CRI 9 = 90 CRI	W = White B = Matte Black G = Light Gray C = Custom Color (Contact Factory)	T = Torx head: Standard P = Phillips head	5 = IP65 Rated: Standard 6 = IP66 Rated, NEMA4 / 4X Rated 7 = IP67 Rated	PM** = Pendant mount CB = Corner mounting bracket Rmxx*** = Row mounting	AE = Anti-microbial coating (exposed areas) CA = Canadian UL Listing EM* = Emergency battery backup F = Fuse holder IO* = Integral Occ Sensor P = Photocell NSF = NSF listing (refer to the NSF version of this cut sheet)

* - Not available on 1 ft. fixture
** - Pendant supplied by others. Customer must provide mounting hole template.
*** - XX= Length of row in feet. (Includes Chase Nipple(s), PVC Gasket(s), and Sealing Locknut(s))



877- 234 - 8460 | info@fmelighting.com

Specifications and dimensions subject to change without notice.

CRI	LED Life
>80	>100,000

LED Source (Box 2)	3000K		3500K		4000K		5000K		Input Watts
	Delivered Lumens	L/W	Delivered Lumens	L/W	Delivered Lumens	L/W	Delivered Lumens	L/W	
1ft. Fixture									
1W4	408	107	414	109	426	112	439	116	3.8
1W7	701	103	712	105	733	108	754	111	6.8
1W10	962	97	977	99	1005	102	1034	104	9.9
2 ft. Fixture									
1W16	1616	95	1640	96	1689	99	1737	102	17.1
1W20	1989	95	2019	96	2017	96	2138	102	21.0
1W24	2334	94	2369	95	2439	98	2509	101	24.9
1W27	2663	93	2703	94	2782	97	2861	100	28.7
3 ft. Fixture									
1W21	2033	98	2063	99	2124	102	2185	105	20.8
1W25	2425	99	2461	100	2533	103	2606	106	24.6
1W32	3141	97	3188	99	3281	102	3375	104	32.3
1W38	3641	96	3695	97	3804	100	3912	103	38.1
4 ft. Fixture									
1W27	2658	102	2698	103	2777	106	2857	109	26.1
1W33	3250	102	3298	104	3395	107	3492	110	31.8
1W43	4177	102	4239	103	4364	106	4489	109	41.0
1W51	4862	100	4935	101	5080	104	5225	107	48.8
1W55	5354	98	5434	99	5594	102	5754	105	54.8

Specified Output Option

Programmable drivers allow us to deliver a specific lumen output. If none of the options in the chart above fit your application, let us know the desired lumen output and we will do the rest. See the example below on how this will be specified:

Example Model:

LLX-1WSOI-8-V-W-T-5-(XXXX)

1W = We will determine the number of rows.

LUMENS = XXXX

Photometric Data @ 80 CRI

90 CRI multiplier	.83
-------------------	-----



Lifetime Warranty: We are proud to offer the FME Lighting Assurance. FME Lighting High Abuse lighting products are manufactured to withstand today's complex and demanding environments. The FME Lighting Company will repair or replace any High Abuse or VR Architectural fixture when installed according to our instructions for the life of the original installation if the fixture should fail due to physical or environmental abuse.