



| | |
|------------|--|
| Project: | |
| Type: | |
| Catalog #: | |

FEATURES

- > Driver (REMOTE) temperature up to 167°F (75°C)
- > UL Listed Drivers with less than 1% failure rate
- > Patent-pending remote driver minimizes fixture operating temperature without re-gridding required
- > Patent-pending design extends fixture life by helping prevent build-up of insulating dust and debris and eliminating illumination dead spots
- > Includes 10 Year Module Warranty - Full light engine or plug & play driver module replacement, rather than parts
- > Fail off 15KA transient voltage surge suppressor (TVSS) protects fixture against failure due to power supply surges
- > Optional motion sensor. Choose from standard by Wattstopper with L7 lens (fig 1.1 & fig 1.2*), or Internet of Things (IOT) by Enlighted Sensors (fig 1.3).
- > Dimmable 0-10V
- > UL 1598 listed
- > IP65 rated

SPECIFICATIONS

Power Factor.....>0.9
 Available Wattages..... 100, 150, 200, 250, 300, 400, 500, 600, 700, 800, 900
 Kelvin Temperatures4000K, 5000K
 Input Voltage 120/277V & 347/480V
 Performance..... Up to 160 lm/W
 Distribution..... 120°, 60° & Aisle
 Mount Type..... Suspension
 Color Rendering Index (4000K)>70
 Color Rendering Index (5000K)>90

LUMINOUS OUTPUT & DIMENSIONS

| WATTAGE | STANDARD TEMP | | HIGH TEMP | | EXTREME TEMP | |
|-----------|----------------|--------|----------------|--------|----------------|--------|
| | OUTPUT | LENGTH | OUTPUT | LENGTH | OUTPUT | LENGTH |
| 100 Watts | 13,220 lumens | 18 in | 13,220 lumens | 18 in | 13,220 lumens | 18 in |
| 150 Watts | 21,600 lumens | 18 in | 21,600 lumens | 26 in | 21,600 lumens | 26 in |
| 200 Watts | 28,800 lumens | 26 in | 28,800 lumens | 34 in | 28,800 lumens | 34 in |
| 250 Watts | 36,000 lumens | 34 in | 36,000 lumens | 42 in | 36,000 lumens | 42 in |
| 300 Watts | 43,200 lumens | 34 in | 43,200 lumens | 50 in | 43,200 lumens | 50 in |
| 400 Watts | 57,600 lumens | 50 in | 57,600 lumens | 66 in | 57,600 lumens | 66 in |
| 500 Watts | 72,000 lumens | 50 in | 72,000 lumens | 82 in | 72,000 lumens | 82 in |
| 600 Watts | 86,400 lumens | 66 in | 86,400 lumens | 98 in | 86,400 lumens | 98 in |
| 700 Watts | 100,800 lumens | 82 in | 100,800 lumens | 114 in | 100,800 lumens | 114 in |
| 800 Watts | 115,200 lumens | 90 in | 115,200 lumens | 130 in | 115,200 lumens | 130 in |
| 900 Watts | 129,600 lumens | 98 in | 126,000 lumens | 146 in | 126,000 lumens | 146 in |

OPERATIONAL TEMPERATURE

| STANDARD TEMP | HIGH TEMP | EXTREME TEMP |
|------------------------------------|-----------------------------------|------------------------------------|
| -40°F to 130°F (or -40°C to 55°C) | -40°F to 195°F (or -40°C to 90°C) | -40°F to 245°F (or -40°C to 118°C) |

BAA EXTREME ORDERING INFORMATION

ORDER NUMBER: BAX-1-100-40-1-2-1-1-1-X-X-X-1-1

| SERIES | WATTAGE | KELVIN | OPTICS | LENS | FINISH | DRIVER VOLTAGE | REMOTE CABLE | MOTION SENSOR | BATTERY BACKUP | DLC | POWER CORD TYPE | CORD LENGTH |
|-----------------|------------------|-------------|--------------|---------------------------------|----------|----------------|--------------|--------------------------|----------------|-------------|-------------------------|-------------|
| BAX-1-Std Temp | 100 | 40- (4000K) | 1- No Optics | 2- Flat Poly Clear ² | 1- Black | 1- 120/277V | 1- 6' | X- No | X- No | X- N/A | 1- whip 120-277V | 1- 6' |
| BAX-2-High Temp | 150 ¹ | 50- (5000K) | 2- 60° | 6- Tempered glass clear | | 4- 347/480V | 2- 10' | 1- Standard ³ | 1- Yes | 1- Standard | 2- whip 347-480V | 2- 12' |
| BAX-3 Extreme | 200 | | 4- Aisle | | | | 3- 25' | 2- IOT ³ | | | 3- 125V 15amp Straight | |
| | 250 ¹ | | | | | | 4- 50' | | | | 4- 125V 20amp Twistlock | |
| | 300 | | | | | | 5- 100' | | | | 5- 250V 20amp Twistlock | |
| | 400 ¹ | | | | | | 6- 200' | | | | 6- 277V 15amp Twistlock | |
| | 500 ¹ | | | | | | 7- 500' | | | | 7- 277V 20amp Twistlock | |
| | 600 ¹ | | | | | | 8- 1,000' | | | | 8- 480V 20amp Twistlock | |
| | 700 ¹ | | | | | | 9- Custom | | | | 9- 600V 20amp Twistlock | |
| | 800 ¹ | | | | | | | | | | | |
| | 900 ¹ | | | | | | | | | | | |

¹ Under review - DLC approval pending

² Due to melting concerns, Flat Poly Clear Lenses are only available with BAX1 Standard Temperature Fixtures

³ Motion Sensor information: Standard (1) features sensors by Wattstopper with L7 lens. Internet of Things or IOT, (2) features sensors by Enlighted Sensors

OPTIONS & ACCESSORIES

> Emergency Battery Backup

OPERATION

When AC power fails, OKT's EM series emergency LED driver immediately switches to the emergency mode, operating the LEDs at a reduced lumen output for a minimum of 90 minutes. When AC power is restored, the emergency driver automatically returns to the charging mode.



EM-L2554-LBF
OKT EM series
emergency LED Driver

EMERGENCY LUMEN OUTPUT EXAMPLE - 25 WATT BATTERY

| Est Luminaire Efficacy | Est Lumens @ 1 Minute | Est Lumens @ 45 Minutes | Est Lumens @ 90 Minutes |
|------------------------|-----------------------|-------------------------|-------------------------|
| 140 LPW | 3500 | 3500 | 3500 |
| 150 LPW | 3750 | 3750 | 3750 |
| 160 LPW | 4000 | 4000 | 4000 |

> Sensors

*All Motion sensor purchases come as a set, including a motion sensor and an L7 Wattstopper lens. Coverage includes up to 40' and the maximum temperature rating for the motion sensors is 165°F

fig 1.1



FSP-201
Wattstopper
with L7 lens

fig 1.2



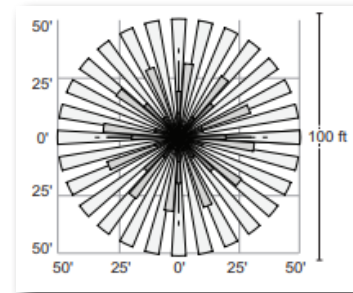
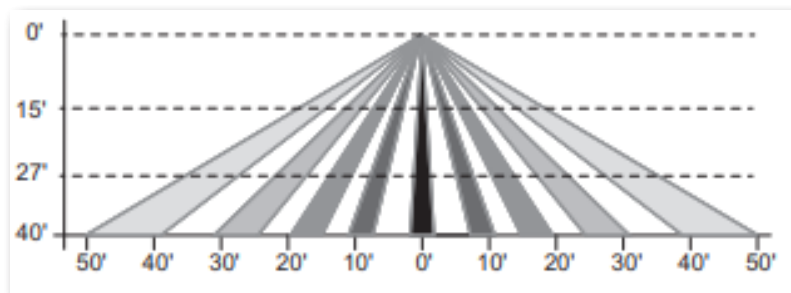
FSP-L7
Wattstopper
with L7 lens

fig 1.3

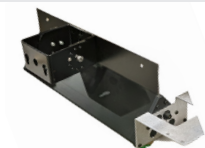


IoT
IoT sensor by
Siemens Enlighted

MOTION SENSOR COVERAGE



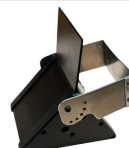
> Mounting Options



CIT-Yoke
Trunnion/
U-Bracket



DB-Strut
Strut Mount
Driver Box



CIT-WM
Universal Swivel
Mount

> Additional Literature

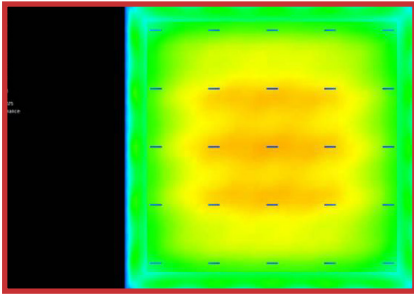
Component Temperature Ratings

- > Cord(s): Up to 90°C (194°F)
- > Nylon Nut(s): Up to 121°C (250°F)
- > Polycarbonate Lens: Up to 138°C (280°F)
- > Motion Sensor: Up to 77°C (167°F)

OPTICS INFORMATION

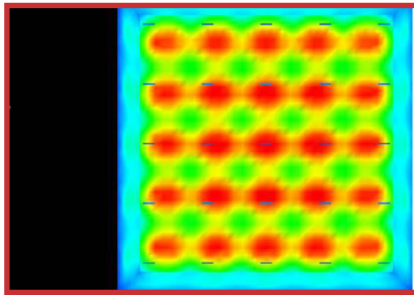
No Optics

- > Great for general illumination. No Optics are also great if you want to maximize horizontal light & to achieve uniform lighting overall. Ideal for 30 feet and below.



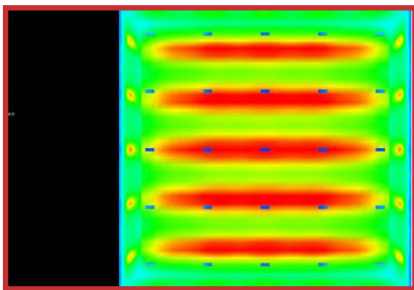
60 Degree Optics

- > Great for higher ceilings. Best used for fixtures mounted 30+ feet up. (This image captures a 25 foot mounting height).



Aisle Optics

- > Great for racking. With Aisle Optics, light is not wasted in adjoining aisles. This means you can reduce the number of fixtures in your facility, or can substantially reduce wattage when switching from HID or Fluorescents to LED.

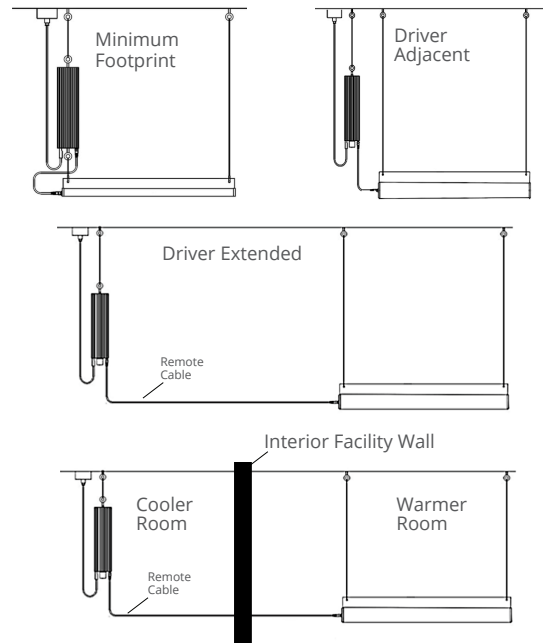


REMOTE DRIVER SYSTEMS

FME Lighting uses drivers that are capable of being in ambient temperatures up to 167°F. With the light engine itself being capable of being in ambient temperatures of 245°F.

If an environment is above 167°F, the driver must be relocated to an area where the temperature falls below that threshold. This can range anywhere from 10' to 1000' with no voltage drop-off.

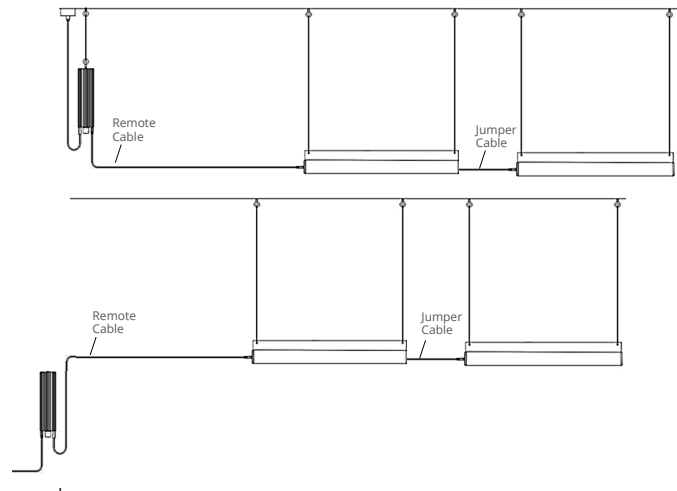
The driver box can be hung at ground level, ceiling level, mounted to strut or to a wall. The universal plug and play allow for complete accessibility.



DAISY CHAIN CONFIGURATIONS

Our custom daisy chain configurations allow you to power multiple fixtures with one driver, saving you money and space. And we can custom-mount your drivers at a height that best suits your environment.

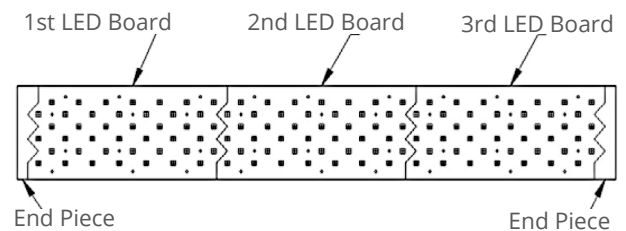
Reach out to a manufacturing representative today for a custom quote for your facility.



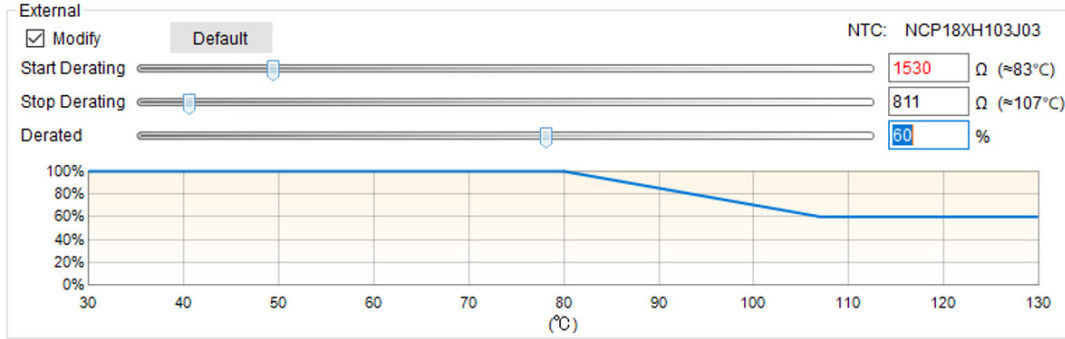
LED BOARD CONFIGURATIONS

Patent-pending shark tooth design enables LED boards to be configured for any of 11 models, ranging from 100-900 Watts. The resulting array provides uniform light distribution with no dead spots.

Each 8" board has a maximum wattage of 75W. The higher the selected wattage of the fixture, the longer the fixture gets.



EXTERNAL THERMISTOR DIMMING



* LEDs set to dim to 60% once the boards reach 108°C

LM80 REPORT

| DATA AVERAGES | | | | | |
|---------------------|-----------------|--------|--------|--------|--------|
| AMBIENT TEMPERATURE | OPERATING HOURS | | | | |
| | 0 | 6,000 | 9,000 | 12,000 | 13,000 |
| 55°C | 100% | 96.92% | 95.99% | 95.33% | 95.08% |
| 85°C | 100% | 96.33% | 95.14% | 94.21% | 93.88% |
| 105°C | 100% | 95.48% | 93.97% | 92.70% | 92.31% |

FLICKER TEST



REPORT

| TEST CONDITIONS | | | |
|-----------------|-----------|--------------|-----------|
| TEMPERATURE | VOLTAGE | POWER FACTOR | FREQUENCY |
| 25.1°C | 120.0 VAC | 0.999 | 60Hz |

| OPERATIONAL DATA | | | |
|------------------|---------------|-------|--------------------|
| PACKAGE | INPUT WATTAGE | CCT | CIT-X LUMENS (LPW) |
| 100W | 89.24 W | 4000K | 13,220 (156) |
| | | 5000K | 13,881 (139) |
| 150W | 153.3 W | 4000K | 21,600 (153) |
| | | 5000K | 22,680 (151) |
| 200W | 203.6 W | 4000K | 32,900 (157) |
| | | 5000K | 34,545 (165) |
| 250W | 258.0 W | 4000K | 36,000 (144) |
| | | 5000K | 39,910 (151) |
| 300W | 299.0 W | 4000K | 42,820 (159) |
| | | 5000K | 49,550 (159) |
| 350W | 348.7 W | 4000K | 57,793 (165) |
| | | 5000K | 57,973 (165) |
| 400W | 398.4 W | 4000K | 66,050 (165) |
| | | 5000K | 66,050 (165) |

3.1 DATA SET 1, 55°C, 200mA (LUMEN MAINTENANCE)

| No. | V _F (V) | Φ(lm) | Lumen Maintenance (%) | | | | | | | | | | | | |
|--------|--------------------|--------|-----------------------|---------|---------|---------|---------|---------|---------|---------|---------|---------|----------|----------|----------|
| | | | 0hr (Initial) | 1000hrs | 2000hrs | 3000hrs | 4000hrs | 5000hrs | 6000hrs | 7000hrs | 8000hrs | 9000hrs | 10000hrs | 11000hrs | 12000hrs |
| 1 | 25.92 | 630.4 | 99.21 | 98.86 | 98.41 | 97.76 | 97.27 | 97.08 | 96.83 | 96.51 | 96.05 | 95.78 | 95.59 | 95.42 | 95.02 |
| 2 | 26.25 | 650.3 | 98.94 | 98.77 | 98.59 | 98.37 | 97.42 | 96.97 | 96.79 | 96.54 | 96.14 | 96.05 | 95.91 | 95.62 | 95.59 |
| 3 | 26.16 | 648.8 | 99.21 | 99.18 | 99.11 | 98.38 | 98.06 | 97.63 | 97.33 | 96.95 | 96.62 | 96.41 | 96.18 | 96.09 | 95.92 |
| 4 | 26.47 | 640.9 | 99.14 | 98.85 | 98.08 | 97.04 | 96.77 | 96.69 | 96.43 | 96.07 | 95.90 | 95.80 | 95.65 | 95.37 | 94.98 |
| 5 | 26.19 | 638.1 | 99.14 | 98.82 | 98.14 | 97.38 | 97.09 | 96.72 | 96.44 | 95.89 | 95.61 | 95.38 | 95.27 | 95.05 | 94.80 |
| 6 | 26.05 | 641.3 | 99.20 | 99.06 | 98.35 | 97.97 | 96.99 | 96.55 | 96.09 | 95.73 | 95.26 | 94.95 | 94.79 | 94.45 | 94.09 |
| 7 | 26.34 | 636.7 | 98.93 | 98.51 | 98.30 | 97.68 | 97.19 | 96.80 | 96.29 | 95.90 | 95.65 | 95.38 | 95.16 | 94.93 | 94.58 |
| 8 | 26.27 | 645.8 | 99.24 | 98.84 | 98.58 | 97.89 | 97.51 | 97.38 | 97.04 | 96.78 | 96.30 | 96.07 | 95.63 | 95.52 | 95.42 |
| 9 | 26.22 | 644.8 | 99.40 | 99.12 | 98.71 | 98.60 | 97.98 | 97.64 | 97.02 | 96.71 | 96.53 | 96.20 | 95.87 | 95.63 | 95.39 |
| 10 | 26.15 | 635.3 | 98.77 | 98.73 | 98.24 | 97.75 | 96.95 | 96.76 | 96.49 | 96.29 | 95.92 | 95.75 | 95.42 | 95.17 | 95.01 |
| 11 | 26.14 | 639.0 | 99.17 | 98.92 | 98.23 | 97.48 | 96.90 | 96.54 | 96.31 | 95.96 | 95.62 | 95.41 | 95.40 | 95.12 | 94.91 |
| 12 | 26.12 | 607.8 | 98.96 | 98.21 | 97.96 | 97.22 | 96.78 | 96.33 | 95.99 | 95.41 | 95.13 | 94.95 | 94.62 | 94.46 | 94.27 |
| 13 | 25.86 | 627.6 | 99.09 | 98.66 | 98.12 | 97.55 | 96.75 | 96.22 | 95.94 | 95.73 | 95.54 | 95.38 | 95.14 | 94.89 | 94.60 |
| 14 | 26.06 | 625.6 | 99.38 | 99.26 | 98.90 | 98.31 | 97.55 | 97.15 | 96.55 | 96.36 | 96.15 | 95.88 | 95.72 | 95.40 | 95.24 |
| 15 | 26.17 | 643.6 | 99.18 | 98.87 | 98.71 | 98.07 | 97.14 | 96.92 | 96.38 | 96.22 | 95.87 | 95.71 | 95.49 | 95.18 | 94.73 |
| 16 | 26.24 | 627.3 | 98.80 | 98.37 | 97.85 | 96.83 | 96.33 | 96.14 | 95.73 | 95.36 | 95.01 | 94.91 | 94.69 | 94.29 | 94.23 |
| 17 | 26.25 | 632.9 | 99.37 | 98.70 | 98.53 | 98.09 | 97.14 | 96.93 | 96.70 | 96.56 | 96.43 | 96.21 | 95.97 | 98.53 | 95.70 |
| 18 | 26.28 | 631.3 | 99.02 | 98.56 | 98.26 | 97.54 | 92.20 | 96.71 | 96.64 | 96.45 | 96.09 | 95.88 | 95.69 | 95.31 | 95.20 |
| 19 | 26.09 | 651.5 | 99.22 | 98.77 | 98.30 | 97.76 | 97.59 | 97.18 | 97.13 | 96.88 | 96.70 | 96.52 | 96.21 | 95.92 | 95.56 |
| 20 | 26.13 | 636.2 | 99.76 | 99.07 | 98.83 | 98.77 | 98.02 | 97.74 | 97.60 | 97.25 | 96.81 | 96.70 | 96.49 | 96.37 | 96.05 |
| 21 | 26.25 | 636.4 | 99.31 | 99.01 | 98.65 | 98.51 | 98.05 | 97.42 | 97.28 | 96.18 | 96.53 | 96.28 | 96.15 | 95.80 | 95.44 |
| 22 | 25.99 | 634.1 | 99.10 | 98.63 | 98.42 | 98.23 | 97.40 | 96.81 | 96.69 | 96.39 | 96.04 | 95.90 | 95.82 | 95.43 | 95.02 |
| Ave. | 26.16 | 636.6 | 99.16 | 98.81 | 98.42 | 97.87 | 97.28 | 96.92 | 96.62 | 96.31 | 95.99 | 95.79 | 95.59 | 95.33 | 95.08 |
| Med. | 26.17 | 636.6 | 99.17 | 98.83 | 98.38 | 97.81 | 97.19 | 96.87 | 96.59 | 96.37 | 96.05 | 95.84 | 95.64 | 95.38 | 95.02 |
| st dev | 0.1374 | 9.7938 | 0.2177 | 0.2599 | 0.3172 | 0.5154 | 0.4691 | 0.4494 | 0.4822 | 0.5046 | 0.5055 | 0.5035 | 0.4987 | 0.5278 | 0.5342 |
| Min. | 25.86 | 607.8 | 98.77 | 98.21 | 97.85 | 96.83 | 96.33 | 96.14 | 95.73 | 95.36 | 95.01 | 94.91 | 94.62 | 94.29 | 94.09 |
| Max. | 26.47 | 651.5 | 99.76 | 99.26 | 99.11 | 98.77 | 98.06 | 97.74 | 97.60 | 97.25 | 96.81 | 96.70 | 96.49 | 96.37 | 96.05 |

3.3 DATA SET 2, 85°C, 200mA (LUMEN MAINTENANCE)

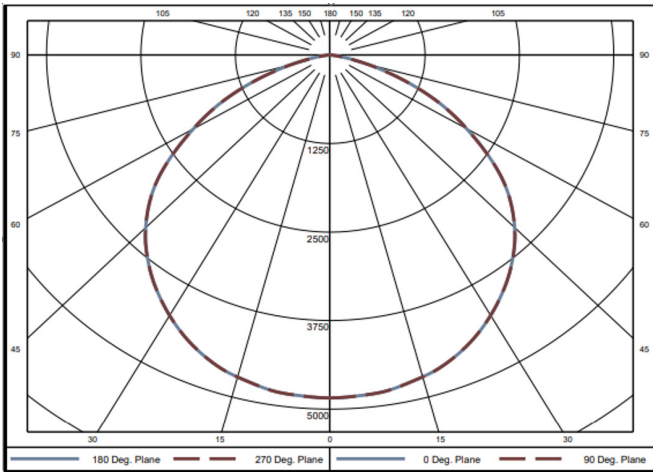
| No. | V _F (V) | Φ(lm) | Lumen Maintenance (%) | | | | | | | | | | | | |
|--------|--------------------|--------|-----------------------|---------|---------|---------|---------|---------|---------|---------|---------|---------|----------|----------|----------|
| | | | Ohr (Initial) | 1000hrs | 2000hrs | 3000hrs | 4000hrs | 5000hrs | 6000hrs | 7000hrs | 8000hrs | 9000hrs | 10000hrs | 11000hrs | 12000hrs |
| 23 | 26.04 | 643.5 | 98.63 | 98.14 | 97.95 | 97.16 | 96.29 | 95.85 | 95.49 | 94.95 | 94.78 | 94.58 | 94.30 | 93.94 | 93.80 |
| 24 | 25.93 | 632.3 | 98.92 | 98.50 | 97.91 | 96.74 | 95.94 | 95.68 | 95.19 | 94.78 | 94.37 | 94.18 | 93.82 | 93.56 | 93.14 |
| 25 | 26.44 | 640.0 | 99.16 | 98.66 | 98.09 | 97.16 | 96.66 | 95.89 | 95.39 | 95.08 | 94.59 | 94.16 | 93.81 | 93.47 | 93.25 |
| 26 | 25.99 | 647.6 | 99.09 | 98.36 | 97.82 | 97.16 | 96.14 | 95.92 | 95.35 | 94.86 | 94.50 | 94.26 | 94.15 | 93.76 | 93.47 |
| 27 | 26.45 | 633.6 | 98.99 | 98.48 | 98.22 | 97.35 | 97.14 | 96.84 | 96.69 | 96.29 | 95.94 | 95.50 | 95.14 | 94.89 | 94.41 |
| 28 | 26.34 | 641.7 | 98.66 | 98.24 | 97.48 | 96.70 | 95.75 | 95.28 | 94.90 | 94.50 | 94.17 | 93.98 | 93.45 | 93.16 | 92.68 |
| 29 | 26.24 | 649.2 | 98.86 | 98.55 | 97.66 | 96.78 | 95.83 | 95.07 | 94.73 | 94.49 | 94.05 | 93.68 | 93.30 | 92.98 | 92.84 |
| 30 | 26.03 | 641.7 | 98.74 | 98.52 | 97.87 | 97.07 | 96.59 | 96.57 | 96.35 | 95.98 | 95.56 | 95.12 | 94.90 | 94.76 | 94.27 |
| 31 | 25.87 | 648.2 | 98.83 | 98.59 | 98.15 | 97.55 | 96.65 | 96.54 | 96.31 | 95.97 | 95.62 | 95.33 | 94.85 | 94.40 | 93.95 |
| 32 | 26.37 | 658.1 | 98.63 | 97.92 | 97.33 | 96.47 | 96.08 | 95.49 | 94.71 | 94.33 | 93.89 | 93.60 | 93.47 | 93.28 | 92.90 |
| 33 | 26.04 | 637.3 | 98.95 | 98.42 | 97.80 | 97.38 | 96.56 | 96.42 | 95.70 | 95.43 | 94.88 | 94.59 | 94.24 | 93.90 | 93.44 |
| 34 | 25.89 | 648.5 | 98.83 | 98.23 | 98.20 | 97.83 | 97.18 | 96.95 | 96.58 | 96.30 | 96.14 | 95.76 | 95.57 | 95.45 | 95.16 |
| 35 | 26.02 | 651.4 | 99.25 | 98.53 | 98.33 | 97.97 | 97.18 | 96.71 | 96.28 | 95.75 | 98.43 | 95.15 | 94.73 | 94.37 | 94.12 |
| 36 | 26.01 | 649.0 | 99.85 | 99.32 | 98.67 | 98.14 | 97.35 | 97.06 | 96.38 | 95.82 | 95.62 | 95.21 | 94.87 | 94.67 | 94.51 |
| 37 | 26.16 | 656.6 | 99.03 | 98.58 | 99.21 | 98.48 | 98.00 | 97.56 | 97.11 | 96.74 | 96.38 | 96.09 | 95.92 | 95.74 | 95.23 |
| 38 | 26.40 | 636.1 | 99.18 | 98.70 | 98.16 | 97.44 | 96.75 | 96.45 | 96.07 | 95.69 | 95.32 | 95.16 | 94.86 | 94.51 | 94.21 |
| 39 | 26.09 | 648.5 | 99.34 | 98.81 | 98.43 | 97.50 | 96.79 | 96.19 | 96.02 | 95.64 | 95.40 | 95.08 | 94.76 | 94.48 | 94.09 |
| 40 | 26.03 | 642.8 | 99.30 | 99.22 | 98.46 | 97.96 | 97.43 | 97.12 | 96.58 | 96.25 | 95.86 | 95.44 | 95.38 | 95.19 | 94.80 |
| 41 | 26.16 | 640.4 | 98.86 | 98.81 | 98.16 | 97.64 | 97.41 | 97.19 | 96.89 | 96.58 | 96.22 | 95.78 | 95.58 | 95.21 | 94.89 |
| 42 | 26.28 | 634.7 | 98.93 | 98.52 | 97.48 | 96.86 | 96.27 | 95.64 | 95.27 | 94.83 | 94.34 | 93.92 | 93.51 | 93.07 | 92.94 |
| 43 | 26.20 | 646.0 | 98.62 | 98.34 | 97.49 | 96.55 | 96.21 | 95.98 | 95.50 | 94.77 | 94.15 | 93.79 | 93.44 | 93.00 | 92.68 |
| 44 | 26.15 | 652.6 | 99.31 | 99.07 | 98.39 | 97.61 | 97.59 | 96.87 | 96.75 | 96.23 | 95.88 | 95.66 | 95.23 | 94.94 | 94.51 |
| Ave. | 26.14 | 644.5 | 99.00 | 98.57 | 98.06 | 97.34 | 96.72 | 96.33 | 95.92 | 95.51 | 95.14 | 94.82 | 94.51 | 94.21 | 93.88 |
| Med. | 26.12 | 644.8 | 98.94 | 98.52 | 98.12 | 97.36 | 96.65 | 96.43 | 96.05 | 95.66 | 95.36 | 95.10 | 94.75 | 94.38 | 94.02 |
| st dev | 0.1774 | 7.1951 | 0.2970 | 0.3350 | 0.4440 | 0.5369 | 0.6255 | 0.6785 | 0.7263 | 0.7411 | 0.7882 | 0.7680 | 0.8051 | 0.8488 | 0.8147 |
| Min. | 25.87 | 632.3 | 98.62 | 97.92 | 97.33 | 96.47 | 95.75 | 95.07 | 94.71 | 94.33 | 93.89 | 93.60 | 93.30 | 92.98 | 92.68 |
| Max. | 26.45 | 658.1 | 99.85 | 99.32 | 99.21 | 98.48 | 98.00 | 97.56 | 97.11 | 96.74 | 96.38 | 96.09 | 95.92 | 95.74 | 95.23 |

3.5 DATA SET 3, 105°C, 200mA (LUMEN MAINTENANCE)

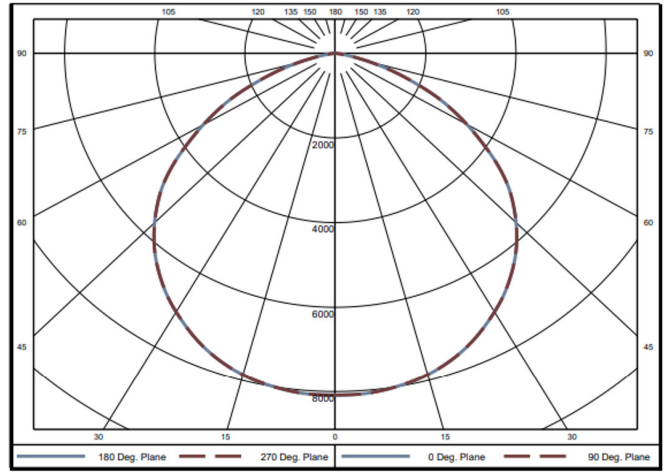
| No. | V _F (V) | Φ(lm) | Lumen Maintenance (%) | | | | | | | | | | | | |
|--------|--------------------|--------|-----------------------|---------|---------|---------|---------|---------|---------|---------|---------|---------|----------|----------|----------|
| | | | 0hr (Initial) | 1000hrs | 2000hrs | 3000hrs | 4000hrs | 5000hrs | 6000hrs | 7000hrs | 8000hrs | 9000hrs | 10000hrs | 11000hrs | 12000hrs |
| 45 | 26.31 | 639.0 | 99.01 | 98.48 | 97.79 | 96.73 | 95.92 | 95.31 | 94.87 | 94.26 | 93.80 | 93.40 | 92.94 | 92.47 | 92.16 |
| 46 | 26.17 | 645.4 | 98.99 | 98.22 | 97.57 | 97.07 | 96.16 | 95.32 | 95.18 | 94.67 | 94.17 | 93.76 | 93.11 | 92.84 | 92.28 |
| 47 | 26.05 | 648.0 | 99.15 | 98.37 | 98.02 | 97.13 | 96.67 | 96.11 | 95.57 | 95.02 | 94.34 | 93.83 | 93.46 | 93.16 | 92.75 |
| 48 | 26.20 | 639.6 | 98.95 | 98.55 | 97.72 | 96.89 | 95.95 | 95.29 | 94.89 | 94.15 | 93.62 | 93.14 | 92.60 | 92.03 | 91.74 |
| 49 | 26.24 | 648.5 | 99.03 | 98.57 | 97.67 | 96.75 | 96.31 | 95.81 | 95.20 | 94.71 | 94.40 | 94.12 | 93.69 | 93.28 | 92.74 |
| 50 | 26.08 | 648.2 | 99.35 | 98.72 | 98.21 | 97.42 | 97.16 | 96.84 | 96.48 | 95.87 | 95.22 | 94.88 | 94.32 | 93.88 | 93.58 |
| 51 | 26.41 | 635.7 | 98.87 | 98.54 | 97.84 | 97.06 | 96.07 | 95.33 | 94.56 | 93.79 | 93.24 | 92.76 | 92.45 | 92.01 | 91.57 |
| 52 | 26.29 | 633.8 | 98.97 | 98.37 | 98.01 | 97.18 | 96.45 | 95.55 | 94.87 | 94.29 | 93.83 | 93.48 | 92.88 | 92.54 | 92.19 |
| 53 | 26.07 | 641.5 | 99.08 | 98.07 | 97.68 | 95.88 | 94.86 | 94.50 | 94.01 | 93.42 | 93.11 | 92.67 | 92.11 | 91.69 | 91.32 |
| 54 | 26.35 | 637.9 | 99.03 | 98.21 | 97.52 | 97.02 | 95.85 | 95.69 | 95.20 | 94.73 | 94.37 | 93.84 | 93.35 | 92.84 | 92.33 |
| 55 | 25.99 | 639.0 | 98.89 | 98.47 | 97.398 | 96.85 | 96.48 | 96.06 | 95.32 | 94.90 | 94.30 | 93.96 | 93.57 | 93.10 | 92.52 |
| 56 | 26.18 | 639.4 | 99.12 | 98.20 | 97.79 | 96.67 | 95.93 | 95.87 | 95.20 | 94.64 | 93.98 | 93.73 | 93.53 | 92.99 | 92.71 |
| 57 | 26.32 | 632.3 | 99.04 | 97.96 | 97.31 | 96.28 | 95.40 | 95.14 | 94.65 | 94.35 | 93.71 | 93.20 | 92.88 | 92.33 | 92.12 |
| 58 | 26.26 | 643.2 | 98.63 | 97.89 | 97.25 | 96.10 | 95.60 | 95.18 | 94.50 | 93.92 | 93.27 | 92.79 | 92.40 | 91.95 | 91.51 |
| 59 | 26.26 | 632.8 | 99.05 | 98.44 | 97.49 | 96.78 | 95.97 | 95.73 | 94.99 | 94.47 | 94.11 | 93.63 | 93.14 | 92.86 | 92.57 |
| 60 | 26.30 | 638.0 | 99.17 | 98.43 | 97.38 | 96.45 | 95.47 | 95.25 | 94.81 | 94.12 | 93.50 | 93.21 | 92.57 | 92.26 | 91.93 |
| 61 | 26.20 | 636.0 | 99.09 | 98.52 | 97.91 | 96.70 | 96.35 | 96.05 | 95.68 | 95.24 | 94.81 | 94.48 | 94.06 | 93.73 | 93.33 |
| 62 | 26.24 | 636.8 | 98.90 | 98.65 | 97.71 | 96.69 | 95.74 | 94.60 | 94.38 | 94.13 | 93.50 | 93.07 | 92.57 | 92.09 | 91.79 |
| 63 | 25.97 | 641.9 | 98.91 | 98.33 | 97.55 | 96.73 | 96.15 | 95.45 | 95.12 | 94.73 | 94.20 | 93.68 | 93.29 | 92.88 | 92.43 |
| 64 | 25.91 | 632.0 | 99.22 | 98.28 | 97.31 | 96.11 | 95.71 | 94.97 | 94.54 | 94.13 | 93.48 | 93.07 | 92.82 | 92.50 | 92.20 |
| 65 | 26.48 | 636.3 | 98.54 | 97.64 | 96.83 | 96.20 | 96.18 | 95.29 | 94.92 | 94.59 | 94.17 | 93.84 | 93.37 | 92.85 | 92.39 |
| 66 | 26.18 | 644.5 | 98.63 | 98.03 | 97.15 | 97.01 | 96.25 | 95.25 | 94.97 | 94.66 | 94.29 | 93.98 | 93.55 | 93.17 | 92.68 |
| Ave. | 26.20 | 639.5 | 98.98 | 98.33 | 97.62 | 96.71 | 96.03 | 95.48 | 95.00 | 94.49 | 93.97 | 93.57 | 93.12 | 92.70 | 92.31 |
| Med. | 26.22 | 639.0 | 99.02 | 98.40 | 97.67 | 96.74 | 96.02 | 95.32 | 94.95 | 94.53 | 94.04 | 93.65 | 93.12 | 92.84 | 92.31 |
| st dev | 0.1442 | 5.1046 | 0.1938 | 0.2787 | 0.3303 | 0.3981 | 0.4818 | 0.5227 | 0.5109 | 0.5227 | 0.5261 | 0.5567 | 0.5583 | 0.5739 | 0.5549 |
| Min. | 25.91 | 632.0 | 98.54 | 97.64 | 96.83 | 95.88 | 94.83 | 94.50 | 94.01 | 93.42 | 93.11 | 92.67 | 92.11 | 91.69 | 91.32 |
| Max. | 26.48 | 648.5 | 99.35 | 98.72 | 98.21 | 97.42 | 97.16 | 96.84 | 96.48 | 95.87 | 95.22 | 94.88 | 94.32 | 93.88 | 93.58 |

DISTRIBUTION - POLAR PLOT

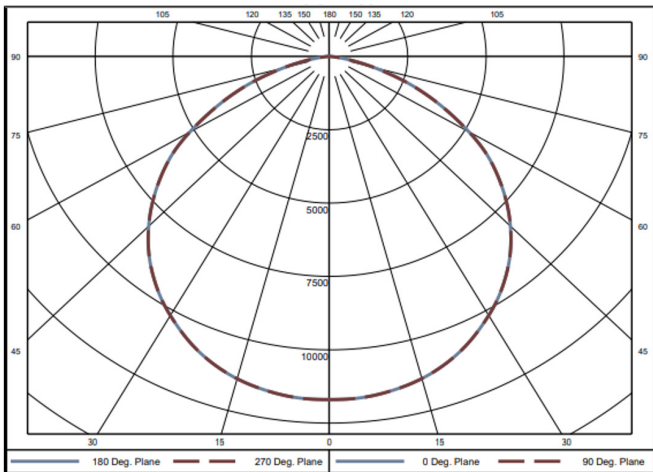
> 100W



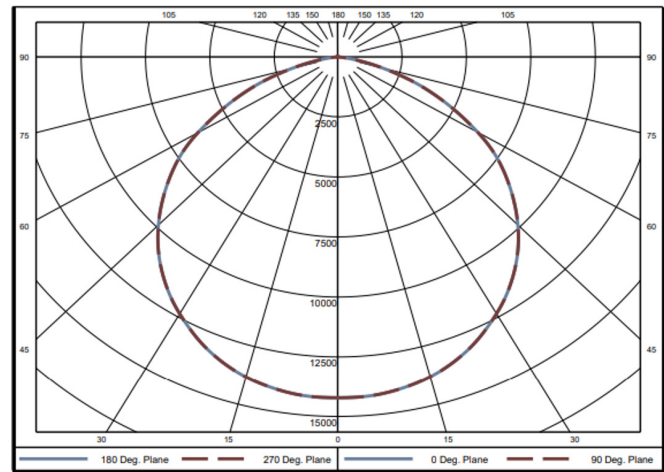
> 150W



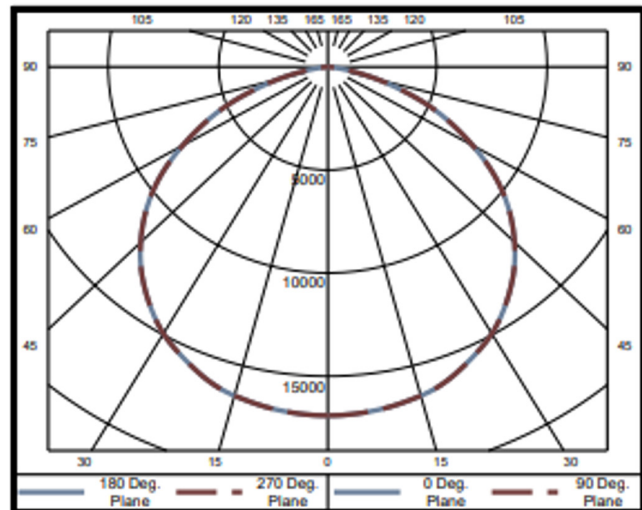
> 200W



> 250W



> 300W



> 400W - NOT TESTED