

| | |
|------------|--|
| Project: | |
| Type: | |
| Catalog #: | |



FEATURES

The HOL Series High Mast is an LED solution for expressway, free way interchanges and other large area applications. Unique reflective optics is designed to optimize application efficiency and minimize glare. The luminaires' is an efficient solution lowering energy consumption as compared to transitional HID fixtures providing additional operating cost savings.

- Smart lighting system
- Lid-latch driver box design
- Less energy consumption
- Easy installation & maintenance

FINISH

- Rugged, weather-tight design and 3G Vibration ratings
- Corrosion resistant polyester powder painted

APPLICATIONS

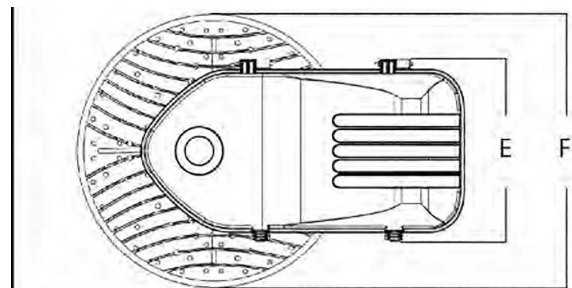
- Expressway and Freeway Inter changes;
- Port Facilities;
- Trailer/Container Yard and Rail Yard Operations.

OPTICS/ELECTRICAL

- Multiple light distributions to maximize performance: 15D,30D,60D, T2M,T3M,T4M, T5.
- -40° C to 50° C (-40°F to 122°F) average operating temp range.
- 1-10V dimming driver device standard.
- 100-277Vac operation, 50/60HZ standard, 347V/480V 50/60Hz optional.

LED

- HOL light engine uses reflective technology to optimize application efficiency and minimize glare. Utilizes high brightness LEDs.
- LM-79 test and report in accordance with IESNA standard
- HOL1 : 3000K - 6500K CCT
- HOL2 / HOL3 : 2700K - 6500K CCT
- Minimum CRI of 70, 80, and 90 optional.



| | A | B | C | | |
|------|--------------|--------------|--------------|--|--------------|
| 230W | 66.4cm/26.0' | 55.5cm/21.7' | 14.9cm/5.8' | | |
| 315W | | | | | |
| 380W | D (INM) | D (INM02) | E | | F |
| | 22.4cm/8.8' | 21.4cm/8.4' | 31.4cm/12.3' | | 46.8cm/18.3' |
| 460W | A | B | C | | |
| 580W | 70.5cm/27.6' | 55.5cm/21.7' | 14.9cm/5.8' | | |
| 720W | D (INM) | D (INM02) | E | | F |
| | 21.8cm/8.5' | 21.1cm/8.3' | 31.4cm/12.3' | | 46.8cm/18.3' |

ORDERING INFORMATION:

| MODEL | WATTAGE | TYPE | VOLTAGE | LED CHIPS | SENSORS | CCT & CRI | DISTRIBUTION | MOUNTING | HOUSING |
|-------|--|-------------------|--------------------------------|---------------------------------------|---|--|--|-----------------|--------------------------------|
| HOL | 23 = 230W 31 = 315W 38 = 380W 46 = 460W 58 = 580W 72 = 720W | 1* 2** 3*** | LV = 120-277V HV = 347-480V | LS = Lumileds 5050 Y22 = Seoul Y22 | ND = Non Dimmable DM = Dimmable 5P = 5-Pin Photocell 7P = 7-Pin Photocell R = Internal Receptacle with shorting cap | 3070 = 3000K / 70 CRI 4070 = 4000K / 70 CRI 5070 = 5000K / 70 CRI 5770 = 5700K / 70 CRI 6570 = 6500K / 70 CRI 3080 = 3000K / 80 CRI 4080 = 4000K / 80 CRI 5080 = 5000K / 80 CRI 5780 = 5700K / 80 CRI 6580 = 6500K / 80 CRI | 15 = 15° 30 = 30° 60 = 60° T2M = Type II Medium T3M = Type III Medium T4M = Type IV Medium T5 = Type V | SF = Slipfitter | BK = Black SG = Silver Gray |

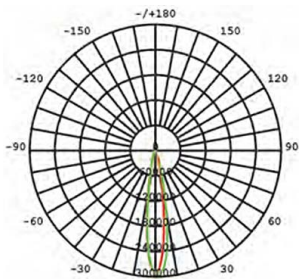
*Type 1 = COB LED with glass lens. Only available with distribution types T2M/T3M/T4M/T5
 **Type 2 = LED Board with glass lens. Only available with distribution types T2M/T3M/T4M/T5
 ***Type 3 = LED Board with PC Lens. Only available with distribution types 15/30/60

| MODEL | TYPE | WATTS | OPTICS | LUMEN OUPUT | EFFICACY | REPLACE MHL | IP&IK | FIXTURE DIMENSION | NW | PACKAGE DIMENSION | GW |
|--------|------|-------|----------------|-------------|----------|-------------|-------------|-------------------------------------|-----------------|--------------------------------------|---------------|
| HOL-23 | 1 | 230W | T2M/T3M/T4M/T5 | 33350lm | 145lm/W | 850W | IP66 & IK08 | 26x18.3x8.8in (66.4x46.8x22.4cm) | 40.8lb (18.5kg) | 28.9x21.25x11.81in (73.5x54x30cm) | 44.1lb (20kg) |
| | 2 | | T2M/T3M/T4M/T5 | 35420lm | 154lm/W | | IP66 & IK08 | | 40.8lb (18.5kg) | | 44.1lb (20kg) |
| | 3 | | 15°/30°/60° | 38410lm | 167lm/W | | IP66 & IK10 | | 40.8lb (18.5kg) | | 44.1lb (20kg) |
| HOL-31 | 1 | 315W | T2M/T3M/T4M/T5 | 43470lm | 138lm/W | 1000W | IP66 & IK08 | 26x18.3x8.8in (66.4x46.8x22.4cm) | 40.8lb (18.5kg) | 28.9x21.25x11.81in (73.5x54x30cm) | 44.1lb (20kg) |
| | 2 | | T2M/T3M/T4M/T5 | 47250lm | 150lm/W | | IP66 & IK08 | | 45lb (20.5kg) | | 50.7lb (23kg) |
| | 3 | | 15°/30°/60° | 52605lm | 167lm/W | | IP66 & IK10 | | 45lb (20.5kg) | | 50.7lb (23kg) |
| HOL-38 | 1 | 380W | T2M/T3M/T4M/T5 | 51300lm | 135lm/W | 1150W | IP66 & IK08 | 26x18.3x8.8in (66.4x46.8x22.4cm) | 40.8lb (18.5kg) | 28.9x21.25x11.81in (73.5x54x30cm) | 44.1lb (20kg) |
| | 2 | | T2M/T3M/T4M/T5 | 55860lm | 147lm/W | | IP66 & IK08 | | 45lb (20.5kg) | | 52.9lb (24kg) |
| | 3 | | 15°/30°/60° | 59660lm | 157lm/W | | IP66 & IK10 | | 45lb (20.5kg) | | 52.9lb (24kg) |
| HOL-46 | 1 | 460W | T2M/T3M/T4M/T5 | 65780lm | 143lm/W | 1200W | IP66 & IK08 | 27.6x21.6x8.5in (70.5x55x21.8cm) | 45lb (20.5kg) | 30.5x24.4x11.81in (77.5x62x30cm) | 48.5lb (22kg) |
| | 2 | | T2M/T3M/T4M/T5 | 71300lm | 155lm/W | | IP66 & IK08 | | 50.7lb (23kg) | | 57.3lb (26kg) |
| | 3 | | 15°/30°/60° | 77280lm | 168lm/W | | IP66 & IK10 | | 50.7lb (23kg) | | 57.3lb (26kg) |
| HOL-58 | 1 | 580W | T2M/T3M/T4M/T5 | 80040lm | 138lm/W | 1500W | IP66 & IK08 | 27.6x21.6x8.5in (70.5x55x21.8cm) | 45lb (20.5kg) | 30.5x24.4x11.81in (77.5x62x30cm) | 48.5lb (22kg) |
| | 2 | | T2M/T3M/T4M/T5 | 87000lm | 150lm/W | | IP66 & IK08 | | 52.9lb (24kg) | | 59.5lb (27kg) |
| | 3 | | 15°/30°/60° | 92220lm | 159lm/W | | IP66 & IK10 | | 52.9lb (24kg) | | 59.5lb (27kg) |
| HOL-72 | 1 | 720W | T2M/T3M/T4M/T5 | 95040lm | 132lm/W | 2000W | IP66 & IK08 | 27.6x21.6x8.5in (70.5x55x21.8cm) | 45lb (20.5kg) | 30.5x24.4x11.81in (77.5x62x30cm) | 48.5lb (22kg) |
| | 2 | | T2M/T3M/T4M/T5 | 104400lm | 145lm/W | | IP66 & IK08 | | 52.9lb (24kg) | | 59.5lb (27kg) |
| | 3 | | 15°/30°/60° | 112320lm | 156lm/W | | IP66 & IK10 | | 52.9lb (24kg) | | 59.5lb (27kg) |

PHOTOMETRICS

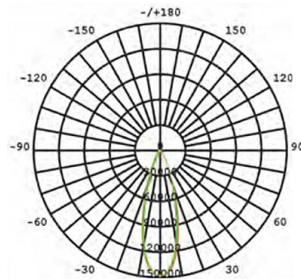
HOL1

15D



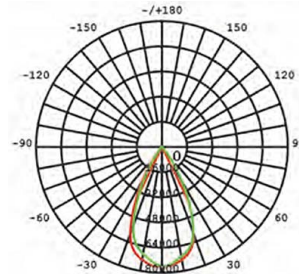
AVERAGE BEAM ANGLE (50%): 16.6°

30D



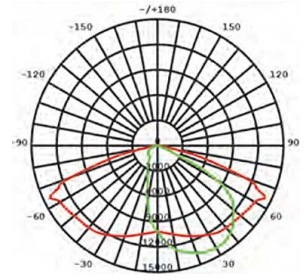
AVERAGE BEAM ANGLE (50%): 30.5°

60D



AVERAGE BEAM ANGLE (50%): 51.6°

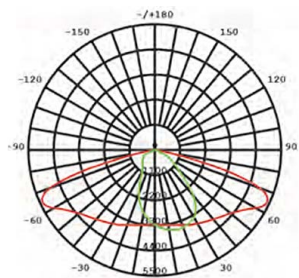
BM



AVERAGE BEAM ANGLE (50%): 110.9°

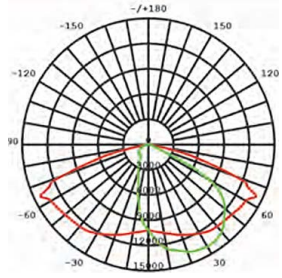
HOL2

T25



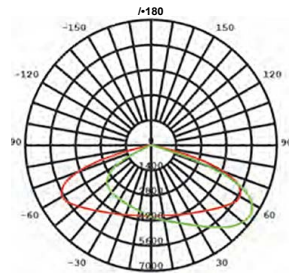
AVERAGE BEAM ANGLE (50%): 110.1°

BM



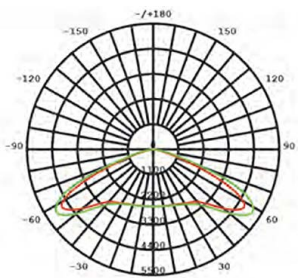
AVERAGE BEAM ANGLE (50%): 110.9°

T4M



AVERAGE BEAM ANGLE (50%): 131.5°

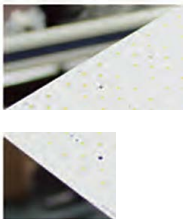
TSM



AVERAGE BEAM ANGLE (50%): 144.5°



- PMMA adopts matrix full light cutting design. By adding a concave light retaining wall, excess light can be removed and the effect of receiving & blocking can be achieved. The design scheme can meet users' requirements for light seeing range to a greater extent.
- The overall streamline of the lamp body is beautiful, generous and decent. The back adopts fin type heat dissipation structure, with better heat dissipation effect. Edge sinking design and convection vents, optimize air convection quality, strengthen heat dissipation, fully ensure the life of the lamp.
- Multiple methods of installation and power supply placement to meet different requirements. External or internal power supply.
- Induction mounting hole is reserved. Offer customers more functional options and more convenient for upgrading in the future.
- IP66 protection grade, waterproof structure design + high resistance wire sili-cone waterproof ring design, double protection, safer. Better protection of the lamp IP performance.
- Super bracket design, bracket strength can support more than 10 times the weight of the lamp body, the safety factor is higher than counterparts.



High performance modular LED light engine



For easy wiring & installation



3 or 7-pin receptacle with a variety of controls options



Bolt mounting 3G rating